



### NURSERY PUPILS ONLY

## Child Nasal Flu Vaccination



If your child does not attend nursery or has missed their vaccination at nursery, please come along to our Nasal Flu Vaccination Clinic.

For children aged 2 or 3 years old or started school September 2024 & is registered at a one of the below GP Surgeries -

### Saturday 30<sup>th</sup> November

At Robin Park Leisure Centre,  
From 9am - 12pm  
No appointment required

- Aspull Surgery
- Beech Hill Medical Practice
- Bradshaw Medical Practice
- Dicconson Group Practice
- Longshoot Health Centre
- Marsh Green Medical Practice
- Mesnes View Surgery
- Newtown Medical Practice
- Pemberton Surgery
- Shevington Surgery
- Standish Medical Practice
- Sullivan Way Surgery
- Wroughtington St Surgery



For more information contact Wigan Borough Federated Healthcare - 01942 369690



### RECEPTION VISIT LIVERPOOL

Earlier this week our Reception pupils visited Liverpool World Museum and Walker Art Gallery! They had a fantastic day and even managed to find the painting from their Take One Picture topic.

A big thank you to all of the special helpers that came on the trip. Lots more photos on the class X page.



### RECEPTION 2025

The online application form for Reception 2025 is now open. Please follow the link below to apply online.

**The closing date for applications is 15th January 2025.**

If you need help with your application please see the school office.

<https://www.wigan.gov.uk/resident/education/schools/school-admissions/primary-schools.aspx>

### SCHOLASTIC BOOK FAIR

The Book Fair will be back in school on the week commencing 2nd December, keep an eye out for more information next week.

### CONGRATULATIONS

Huge congratulations to Mason's parents who welcomed their beautiful baby boy Lucien to the world this week.

Welcome to the Beech Hill family!



**PLEASE REMEMBER SWIMMING KITS AND MUSICAL INSTRUMENTS ON WEDNESDAYS.**

### ATTENDANCE

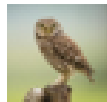
Regular attendance at school is crucial if children are to achieve the best outcomes possible. Please ensure your child attends school every day or you may be given a fixed penalty notice.

Best attending classes week ending 15/11/24:  
**EY/KS1 - Owl 99.3%**  
**KS2 - Swallow 91.6%**

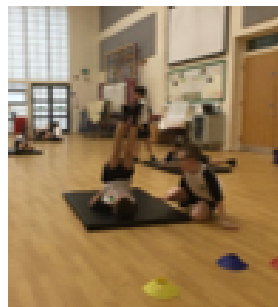
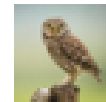
### KEY DATES FOR YOUR DIARY

- 04.12.24: Y4/5 Brass Concert
- 09.12.24: KS1 Nativity
- 10.12.24: EYFS Nativity (AM)
- 10.12.24: KS2 Nativity (PM)
- 12.12.24: Christmas meal and jumper day
- 12.12.24: Y3/4 class trip (concert at Robin Park)
- WC 16.12.24: Christmas parties
- 20.12.24: School closes for Christmas break
- 06.01.25: Inset Day
- 07.01.25: Return to school





# Owls Newsletter



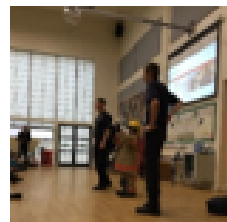
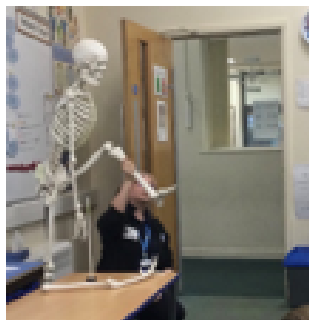
## PE

Our focus this term has been gymnastics. We've explored different shapes, balances and ways of travelling.



## Science

We have been learning all about the human body and even had a visit from a physiotherapist who helped us to learn lots of interesting facts about the skeleton.

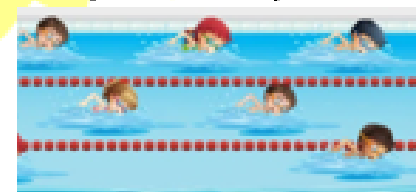


## Visitors

This term we were lucky enough to meet Mighty Max when Wigan Warriors came into school and we also had a very informative chat from some local fire officers about fire and water safety.



The children have been making fantastic progress during their swimming lessons every Wednesday.



## D&T

In DT, we worked in groups to follow the Engineering educates robotics project developed by Manchester University. We designed and created a prototype 'shop a bot' and enjoyed testing them out in the classroom.

